

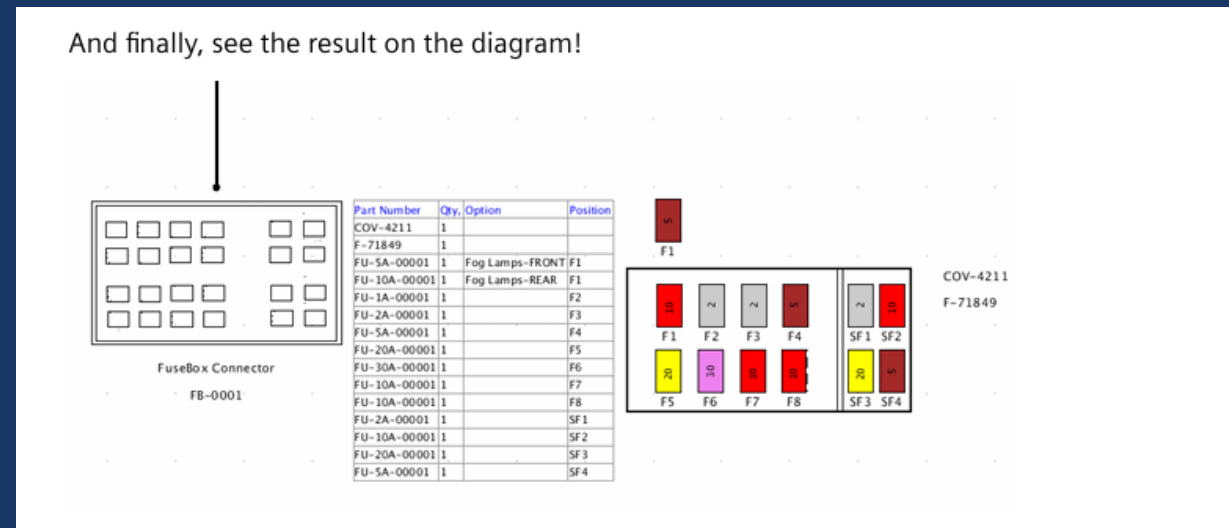
HOW TO's

CDT Tech Day / Capital User Forum

2025-05-27

How To: Creating & Managing Fuse Boxes

Through the collaboration of intelligent related-entity datums in Capital Symbol Designer, Additional Component Position settings in Capital Component Manager and associated Styling features, you are able to fully represent fuse and relay boxes and their related components in Capital Harness Designer, including the automatic display of fuse symbols at their corresponding locations in the fusebox symbol.



How To: Creating & Managing Fuse Boxes

Capital Component Manager

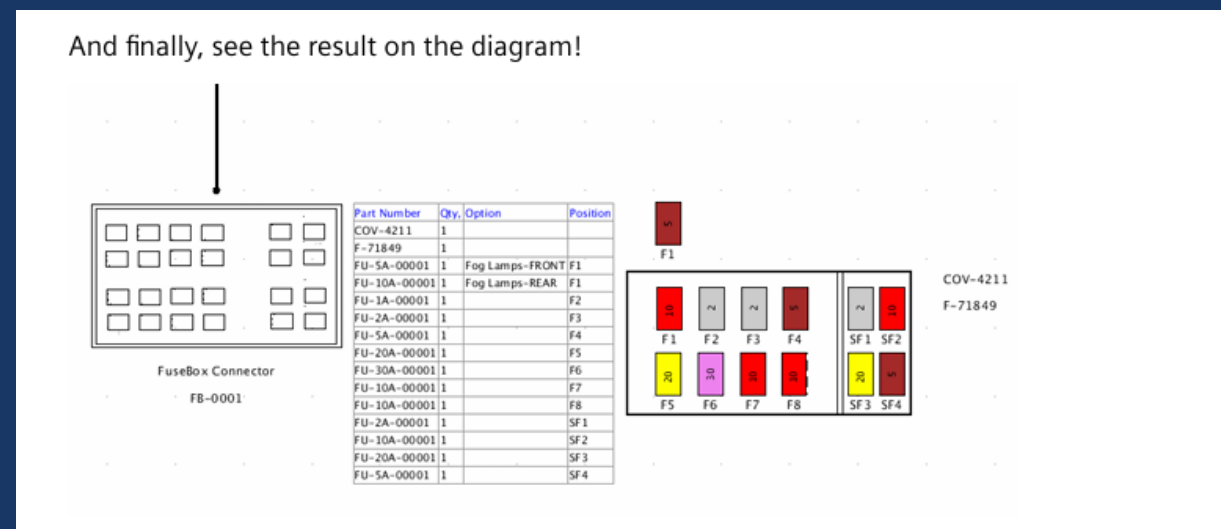
Part numbers are created for the fuse box and the individual devices representing fuses, relays, and other components in the box. The devices are then added to the housing definition (Additional components) to fuse box part number (Connector).

Capital Symbol Designer

Symbols are then created for the fuse box and the devices it contains, with special datums to determine locations where the device symbols will go on the main fuse box symbol.

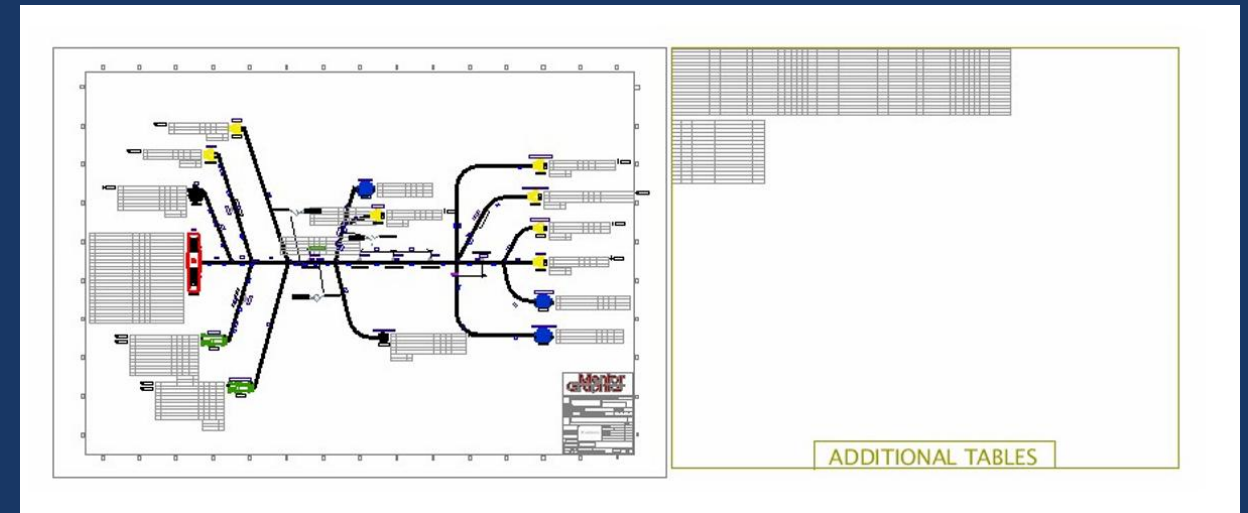
Capital Harness Designer

Harness styling can be set up to allow for the proper representation of the devices on the diagram



How To: Additional Sheets for Tables

It is possible to have multiple sheets displayed on the same diagram. These can be used to contain the additional design tables such as wire table, composite table, etc or alternatively the data tables such as cavity tables, additional component tables.

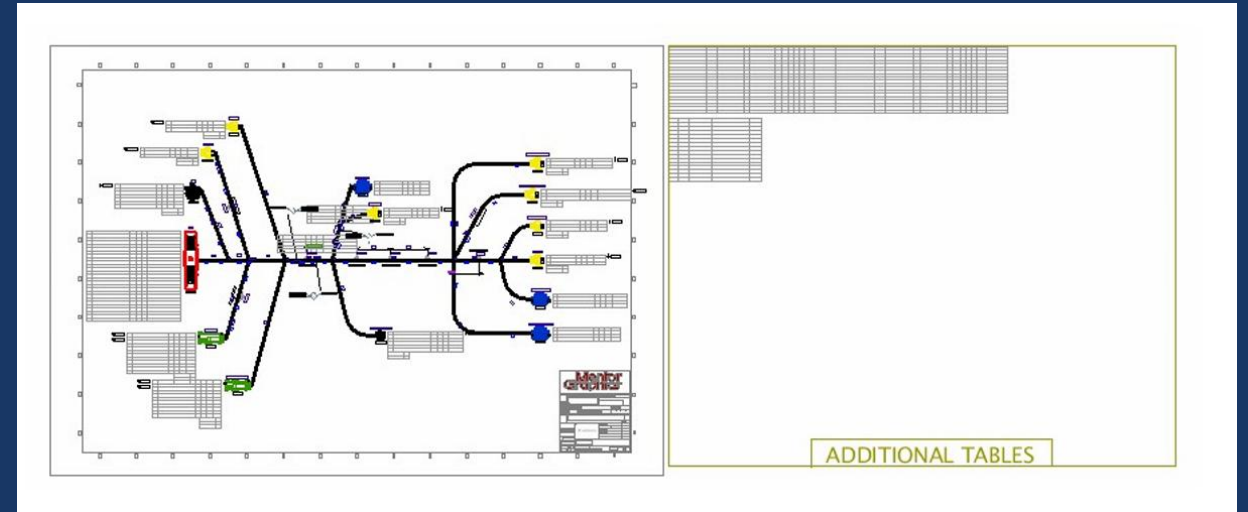


How To: Additional Sheets for Tables

Capital Symbol Designer
Create the additional sheet

Capital Harness Designer

Update the style set to add the additional sheet and
specify the entities to be displayed in it.

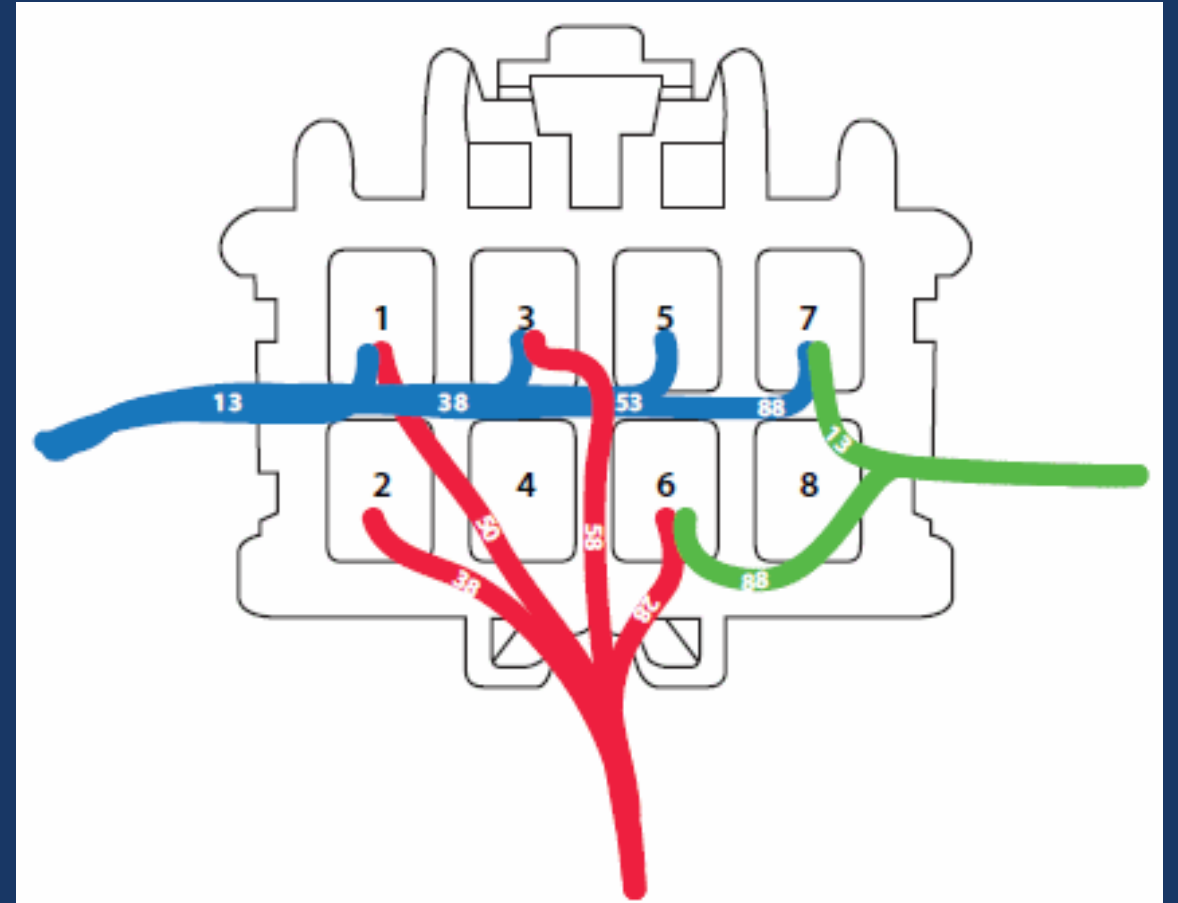


How To: Dressed Routes

A dressed connector or dressed device can accommodate different wire lengths known as dressed routes.

This can be required when:

- The size or orientation of the connector or device necessitates that wires terminating at different cavities require different add-on or knock-off length values.
- The connector can have wires entering by several directions (routes) that require varying wire lengths.



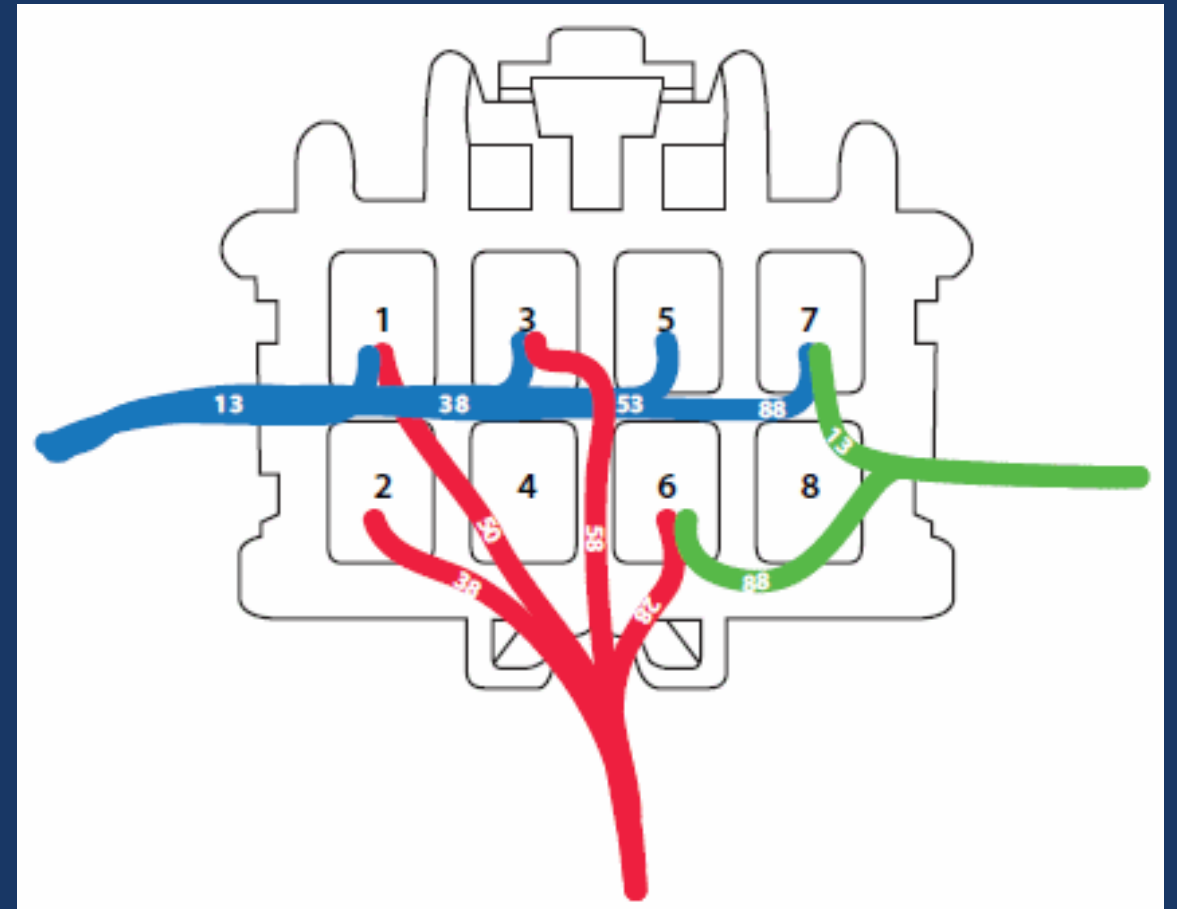
How To: Dressed Routes

Capital Component Manager

You can create a dressed connector or dressed device in the library and specify the routes into it.

Capital Harness Designer

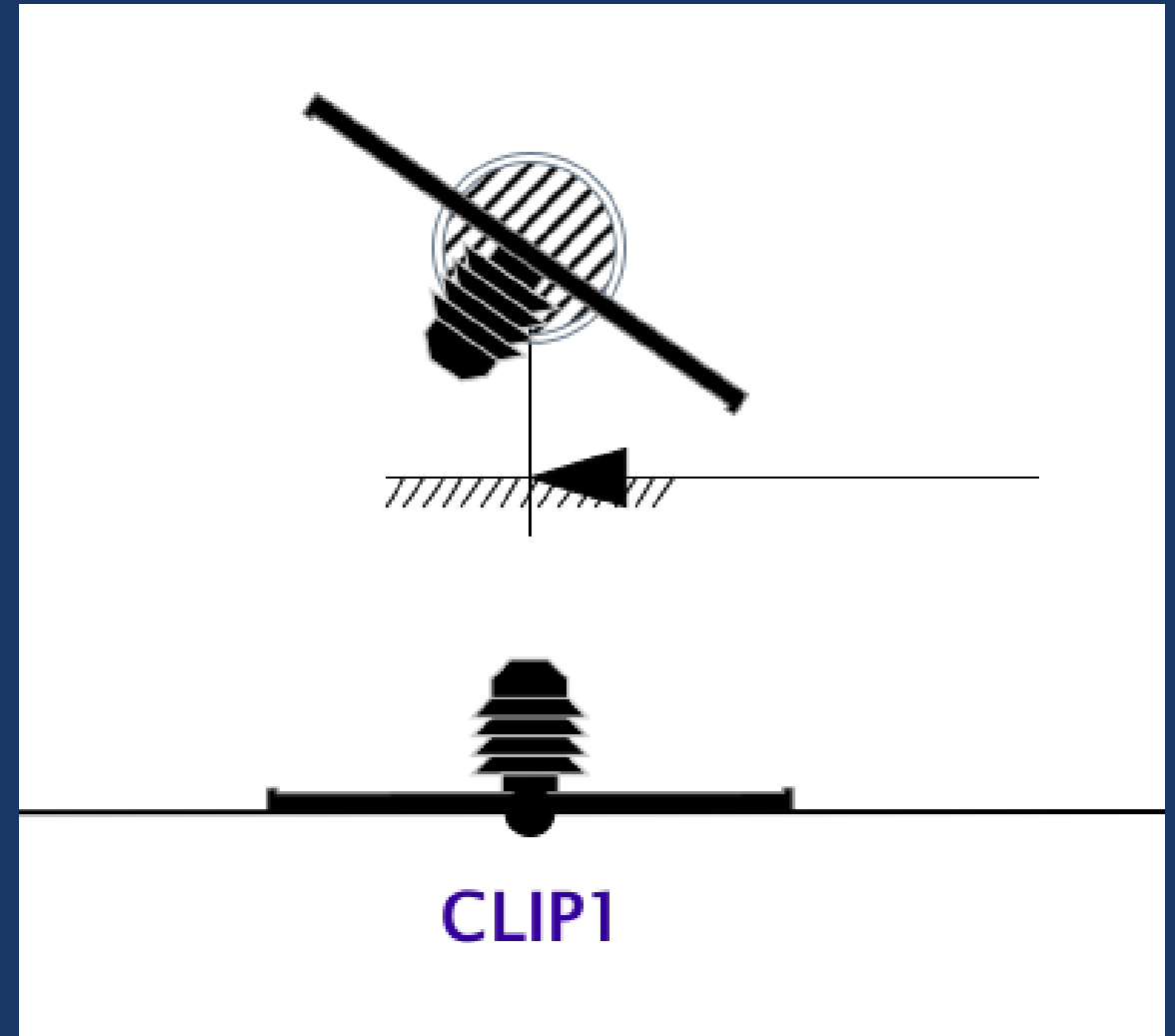
Define routes by which wires can enter, and terminate within, a dressed connector, enabling the calculation of add-on and knock-off values, as required by the dressed connector's design.



How To: Clip Orientation

The clip computed orientation is saved in the Orientation attribute and the View From Node value is assigned appropriately.

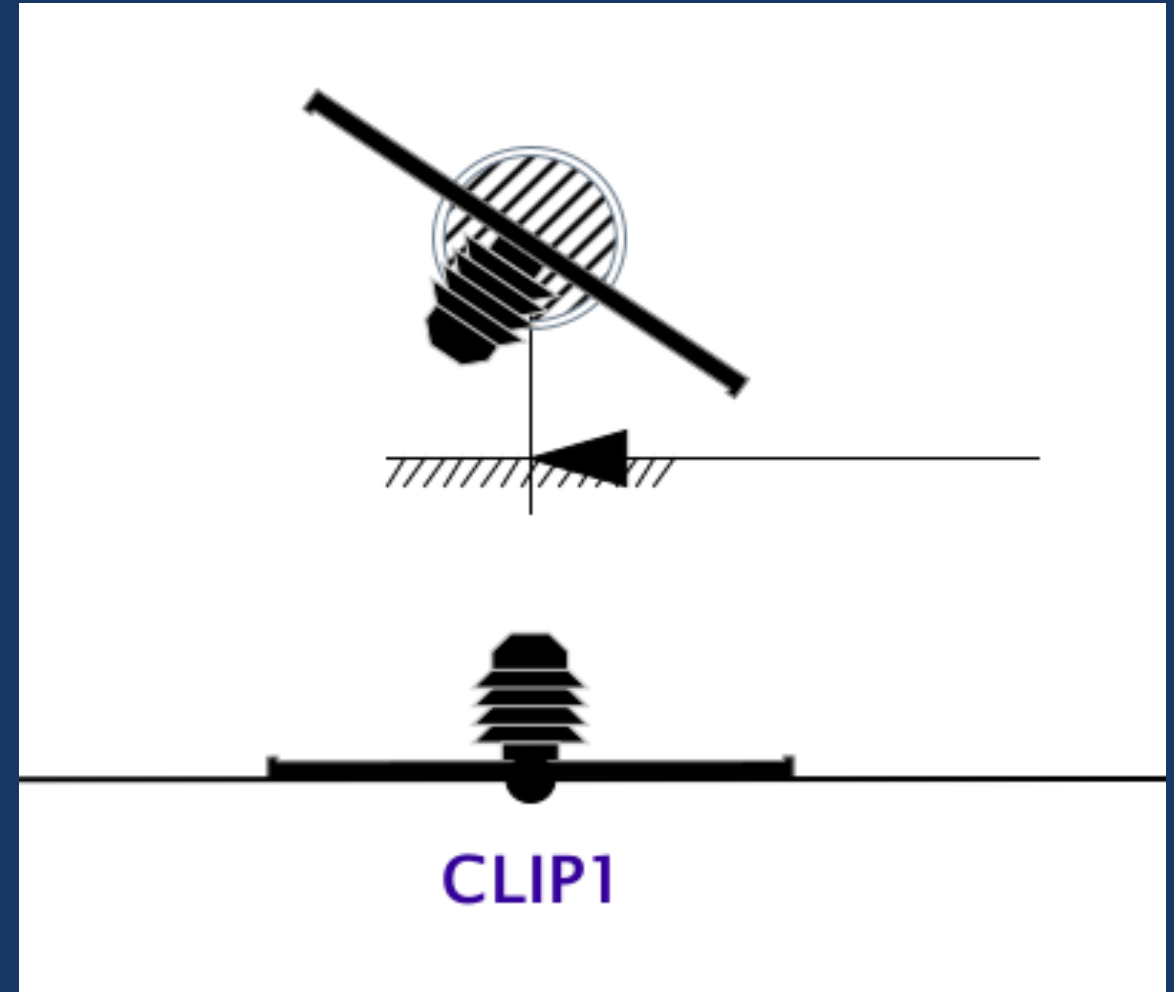
Diagram styling may now be used to display and orient the appropriate symbols for visualization of the clip orientation on the bundle.



How To: Clip Orientation

Capital Harness Designer

The clip styling is assembled from several separate symbols.



THANK YOU